

KEY PLAN



SECOND FLOOR PLAN

SEE SHEET 3
MATCHLINE 'B'

MATCHLINE 'A'

LEGEND

- 110 ROOM NUMBER
- 112 OFFICE
- 113 SQUARE FOOTAGE

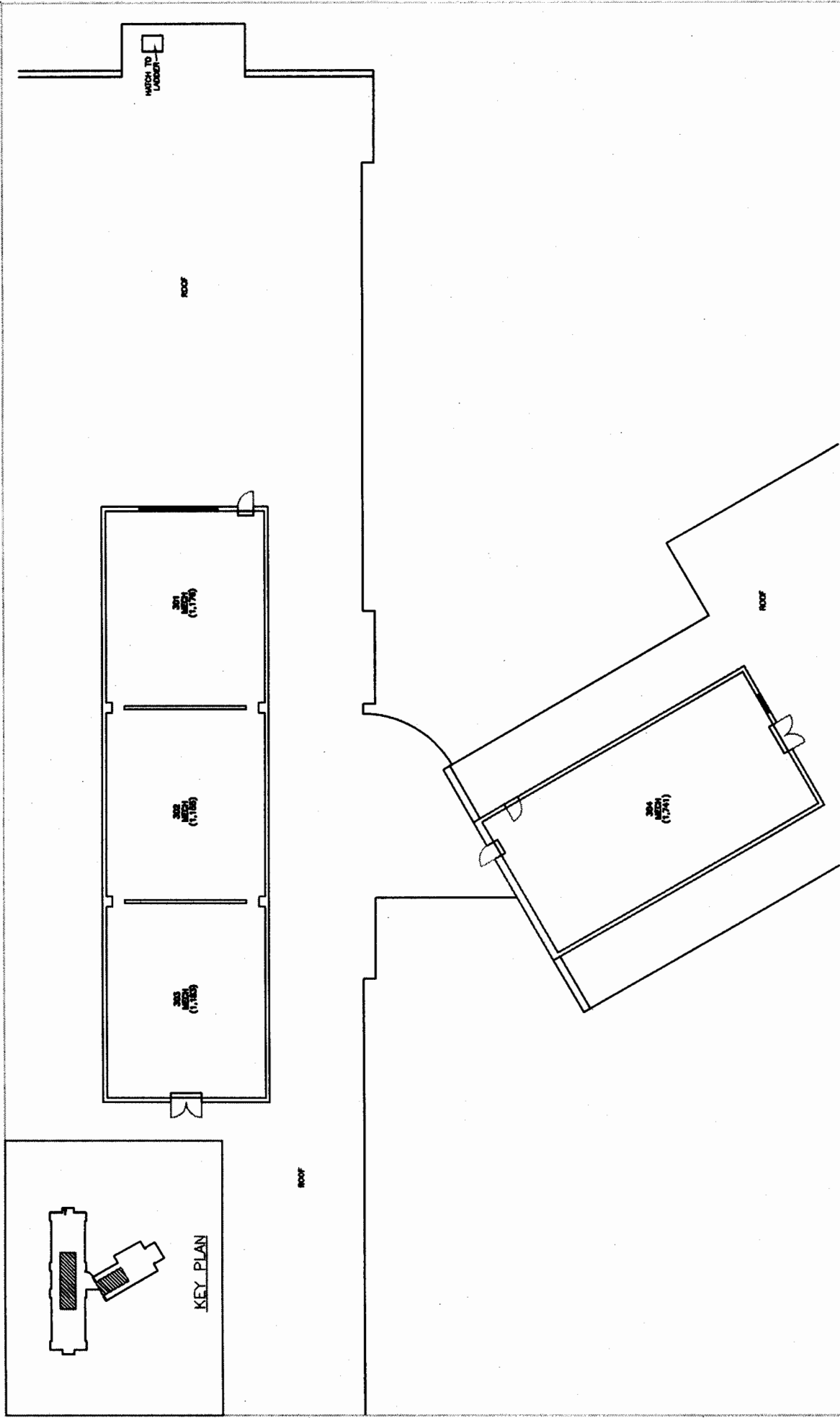
0, 2, 4, 8, 10, 12, 14, 16, 18, 20
MULTIPLIER
GRAPHIC SCALE - FEET

NO.	DATE	BY	CHK.	APP.	REV.

245-246-247
FACILITIES INVENTORY SECTION
UNIVERSITY OF GEORGIA
CENTER FOR APPLIED
GENETIC TECHNOLOGIES
05/01

The University of Georgia
Engineering Department

PROJECT NO. 245-246-247
SHEET NO. 4
DATE 05/01

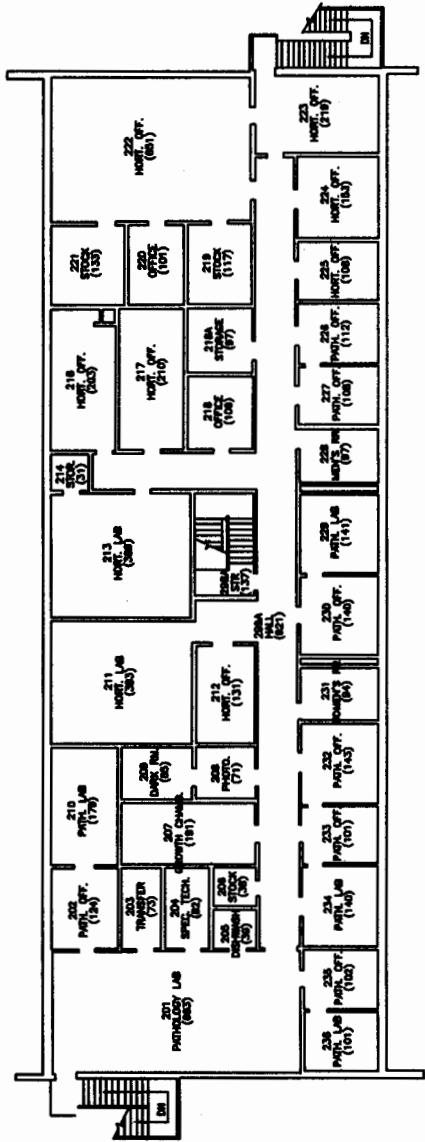


PENTHOUSE FLOOR PLAN

LEGEND
 --- ROOM NUMBER
 --- ROOM AREA
 --- ROOM FOOTAGE

0 1 2 3 4 5 6 7 8 9 10 11 12 13 14 15 16 17 18 19 20
 GRAPHIC SCALE - FEET

UNIVERSITY OF GEORGIA		FACILITIES INVENTORY SECTION	
The University of Georgia Athletic Department		CENTER FOR APPLIED GENETIC TECHNOLOGIES	
DATE	BY	SCALE	NO.
			5
		DATE	06/01/05



SECOND FLOOR PLAN

LEGEND
 — ROOM NUMBER
 - - - OFFICE
 . . . SQUARE FOOTAGE

UNIVERSITY OF GEORGIA
 HORTICULTURE BUILDING
 DRAWING SCALE - 1/8" = 1'-0"

NO.	DESCRIPTION	DATE
1	REVISION	

The University of Georgia
 Horticulture Building

FACILITIES INVENTORY SECTION	
BLDG. NO.	2
FLOOR	2
DATE	
BY	

THE UNIVERSITY OF GEORGIA
 SPACE ASSIGNMENT BY ROOM USE WITHIN DEPARTMENT
 DEPARTMENT OF CROP AND SOIL SCIENCES

DEPT NUMB	DEPARTMENT NAME	ROOM USE	TOTAL SQ FT
153	CROP AND SOIL SCIENCES	ACADEMIC OFFICE	2,146
		CLASS LAB SERVICE	58
		COLD ROOM	594
		CONFERENCE RM OFF REL	604
		CORRIDOR	1,229
		GRADUATE ASST OFFICE	984
		GREENHOUSE SVC	1,008
		LARGE LECTURE ROOM	734
		LOBBY	111
		LOUNGE FACILITY	302
		NON-ACADEMIC OFFICE	2,241
		NON-CLASS LAB SERVICE	3,647
		NON-CLASS LABORATORY	13,605
		OFFICE SERVICE	585
		READING/STUDY ROOM	391
		SPECIAL CLASS LAB	2,336
		SPECIAL CLASS LAB SVC	58
			30,633

THE UNIVERSITY OF GEORGIA
SPACE ASSIGNMENT BY BUILDING WITHIN DEPARTMENT
DEPARTMENT OF CROP AND SOIL SCIENCES

DEPT NUMB	DEPARTMENT NAME	BLDG NUMB	BUILDING NAME	ROOM NUMB	ROOM USE	TOTAL SQ FT
153	CROP AND SOIL SCIENCES	1061	MILLER PLANT SCI	0506	NON-CLASS LAB SERVICE	165
				1201	SPECIAL CLASS LAB	786
				1201A	SPECIAL CLASS LAB SVC	58
				2201	SPECIAL CLASS LAB	754
				2201A	CLASS LAB SERVICE	58
				3101	ACADEMIC OFFICE	134
				3102A	ACADEMIC OFFICE	103
				3102B	NON-CLASS LAB SERVICE	61
				3103	ACADEMIC OFFICE	125
				3104	NON-CLASS LABORATORY	860
				3105	ACADEMIC OFFICE	127
				3105A	OFFICE SERVICE	195
				3106	NON-CLASS LABORATORY	384
				3107	ACADEMIC OFFICE	129
				3108	OFFICE SERVICE	67
				3108A	GRADUATE ASST OFFICE	138
				3108B	GRADUATE ASST OFFICE	81
				3108C	GRADUATE ASST OFFICE	74
				3111	NON-ACADEMIC OFFICE	173
				3111A	ACADEMIC OFFICE	243
				3111B	NON-ACADEMIC OFFICE	202
				3111C	OFFICE SERVICE	181
				3113	CONFERENCE RM OFF REL	399
				3117	ACADEMIC OFFICE	111
				3119	ACADEMIC OFFICE	114
				3121	ACADEMIC OFFICE	112
				3123	ACADEMIC OFFICE	113
				3201	NON-CLASS LAB SERVICE	300
				3202	GRADUATE ASST OFFICE	175
				3203	LARGE LECTURE ROOM	734
				3204	GRADUATE ASST OFFICE	174
				3205	NON-CLASS LABORATORY	810
				3207	NON-ACADEMIC OFFICE	79
				3209	NON-CLASS LABORATORY	478
				3209A	NON-CLASS LAB SERVICE	83
				3403	NON-CLASS LABORATORY	734
				3405	NON-CLASS LABORATORY	695
				3406	SPECIAL CLASS LAB	796
				3407	NON-CLASS LABORATORY	626
				3407A	NON-CLASS LAB SERVICE	90
				4101	ACADEMIC OFFICE	133
				4103	ACADEMIC OFFICE	125
				4104	NON-CLASS LABORATORY	489
				4105	ACADEMIC OFFICE	127
				4106	NON-CLASS LAB SERVICE	141
				4106A	NON-CLASS LAB SERVICE	118
				4107	NON-ACADEMIC OFFICE	129
				4108	NON-CLASS LAB SERVICE	227
				4110	NON-CLASS LABORATORY	780

THE UNIVERSITY OF GEORGIA
SPACE ASSIGNMENT BY BUILDING WITHIN DEPARTMENT
DEPARTMENT OF CROP AND SOIL SCIENCES

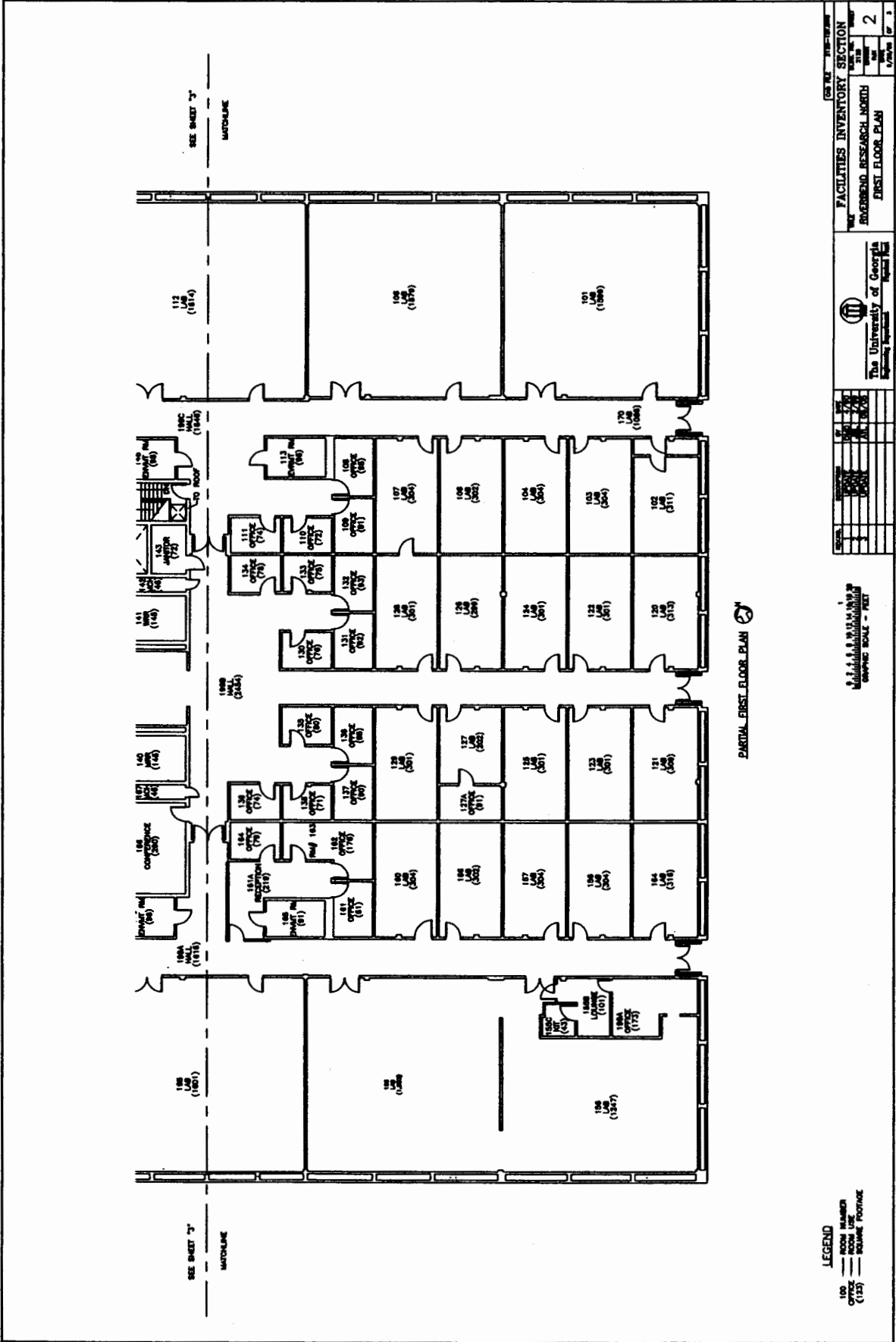
DEPT NUMB	DEPARTMENT NAME	BLDG NUMB	BUILDING NAME	ROOM NUMB	ROOM USE	TOTAL SQ FT
153	CROP AND SOIL SCIENCES	1061	MILLER PLANT SCI	4111	OFFICE SERVICE	42
				4111A	GRADUATE ASST OFFICE	71
				4111B	GRADUATE ASST OFFICE	97
				4111C	GRADUATE ASST OFFICE	101
				4111D	GRADUATE ASST OFFICE	73
				4113	NON-ACADEMIC OFFICE	191
				4113A	OFFICE SERVICE	100
				4113B	NON-ACADEMIC OFFICE	101
				4115	READING/STUDY ROOM	118
				4115A	READING/STUDY ROOM	106
				4115B	READING/STUDY ROOM	100
				4115C	READING/STUDY ROOM	67
				4119	ACADEMIC OFFICE	111
				4121	ACADEMIC OFFICE	114
				4123	ACADEMIC OFFICE	112
				4125	ACADEMIC OFFICE	113
				4202	NON-CLASS LAB SERVICE	45
				4202A	NON-CLASS LAB SERVICE	54
				4202B	NON-CLASS LAB SERVICE	123
				4203	NON-CLASS LABORATORY	731
				4204	NON-CLASS LABORATORY	803
				4205	NON-CLASS LABORATORY	673
				4205A	NON-CLASS LAB SERVICE	72
				4207	NON-CLASS LAB SERVICE	37
				4209	NON-CLASS LABORATORY	654
						18,799
		2408	AGY SOIL BLDG	0001	GREENHOUSE SVC	1,008
						1,008
		2409	SOIL BUILDING 2	0001	NON-CLASS LAB SERVICE	400
				0002	NON-CLASS LABORATORY	486
						886
		2417	RHIZOTRON BUILDING	0101	NON-ACADEMIC OFFICE	193
				0102	NON-CLASS LABORATORY	390
				0103	NON-CLASS LABORATORY	575
						1,158
		2426	AGRONOMY SEED LAB	0001	NON-CLASS LABORATORY	501
				0001A	NON-ACADEMIC OFFICE	108
				0001B	NON-ACADEMIC OFFICE	99
				0001C	NON-ACADEMIC OFFICE	108
				0002	LOUNGE FACILITY	302
				0005	LOBBY	111

THE UNIVERSITY OF GEORGIA
SPACE ASSIGNMENT BY BUILDING WITHIN DEPARTMENT
DEPARTMENT OF CROP AND SOIL SCIENCES

DEPT NUMB	DEPARTMENT NAME	BLDG NUMB	BUILDING NAME	ROOM NUMB	ROOM USE	TOTAL SQ FT
153	CROP AND SOIL SCIENCES	2426	AGRONOMY SEED LAB	0005A	COLD ROOM	594
				0008	NON-CLASS LABORATORY	230
				0008B	NON-CLASS LABORATORY	92
				0009	NON-CLASS LABORATORY	86
				0011	CONFERENCE RM OFF REL	205
				0012	NON-CLASS LABORATORY	424
				0013	NON-CLASS LABORATORY	299
				0014	NON-CLASS LAB SERVICE	95
				0015	NON-CLASS LABORATORY	481
				0016	NON-ACADEMIC OFFICE	119
				0017	NON-ACADEMIC OFFICE	128
				0018	NON-ACADEMIC OFFICE	126
				0019	NON-ACADEMIC OFFICE	131
				0020	NON-CLASS LABORATORY	565
				0021	NON-CLASS LAB SERVICE	716
				0022	NON-CLASS LAB SERVICE	427
				0023	NON-CLASS LAB SERVICE	391
				0023A	NON-CLASS LABORATORY	353
				0024	NON-ACADEMIC OFFICE	145
				0024A	NON-CLASS LABORATORY	406
				0024B	NON-ACADEMIC OFFICE	96
				0024C	NON-ACADEMIC OFFICE	113
				0199A	NON-CLASS LAB SERVICE	102
					CORRIDOR	1,229
						8,782
					CROP AND SOIL SCIENCES TOTAL	30,633

THE UNIVERSITY OF GEORGIA
 SPACE ASSIGNMENT BY ROOM USE WITHIN DEPARTMENT
 DEPARTMENT OF CROP & SOIL SC RSCH COLL

DEPT NUMB	DEPARTMENT NAME	ROOM USE	TOTAL SQ FT
284	CROP & SOIL SC RSCH COLL	ACADEMIC OFFICE	477
		FIELD BUILDING	32,670
		HOUSE	1,585
		NON-ACADEMIC OFFICE	666
		NON-CLASS LAB SERVICE	35,335
		NON-CLASS LABORATORY	10,061
		OFFICE SERVICE	43
		SHOP FAC REST R	81
		SHOP FACILITIES	901
		SHOP FACILITIES SVC	59
		STORAGE FACILITIES	3,101
			84,979



LEGEND
 100 ROOM NUMBER
 OFFICE ROOM NAME
 LAB ROOM USE
 (100) SQUARE FOOTAGE

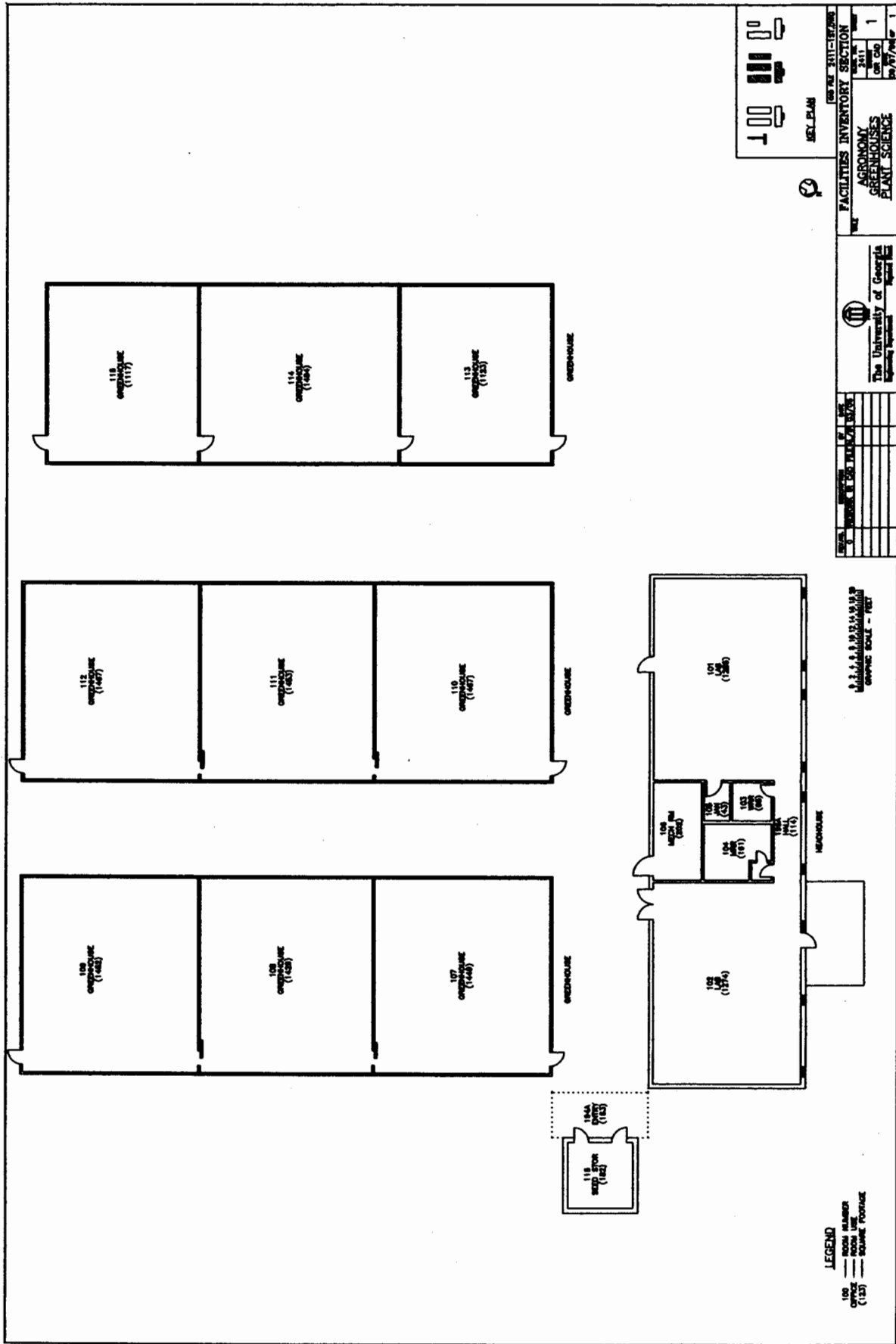
PARTIAL FIRST FLOOR PLAN

A. S. & B. S. ARCHITECTS
 GRAPHIC SCALE - FEET

FACILITIES INVENTORY SECTION	
PROJECT	RIVERBEND RESEARCH NORTH
SECTION	FIRST FLOOR PLAN
DATE	10/1/78
SCALE	1/8" = 1'-0"
SHEET	2
OF	3

DATE	10/1/78
SCALE	1/8" = 1'-0"
SHEET	2
OF	3

The University of Georgia
 Planning Department

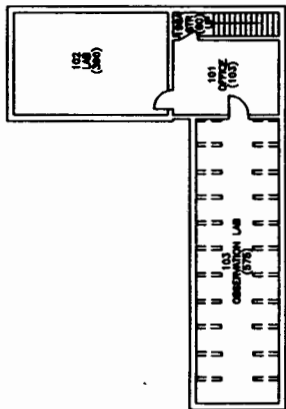



LEGEND
 100 ROOM NUMBER
 — ROOM LINE
 (100) SQUARE FOOTAGE

0 5 10 15 20 FEET
 GRAPHIC SCALE - FEET

The University of Georgia
 Agricultural Experiment Station

FACILITIES INVENTORY SECTION
 DATE 3/11/85
 BY 241
 ON 240
 1
 BY 7/74



FIRST FLOOR PLAN 

LEGEND
 100 ROOM NUMBER
 (102) ROOM FOOTAGE
 (102) ROOM FOOTAGE

0 1 2 3 4 5 6 7 8 9 10 11 12 13 14 15 16 17 18 19 20
 GRAPHIC SCALE - FEET

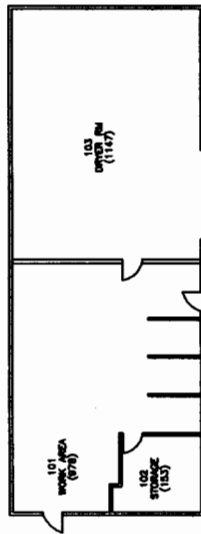


FACILITIES INVENTORY SECTION	
DATE	2/17/78
BY	WJ
NO.	1
OF	1

ROOM	FOOTAGE	NO.	OF	ROOMS	DATE

RHIZOTRON BUILDING

UNIVERSITY OF GEORGIA

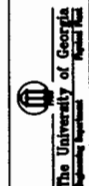


1ST FLOOR PLAN

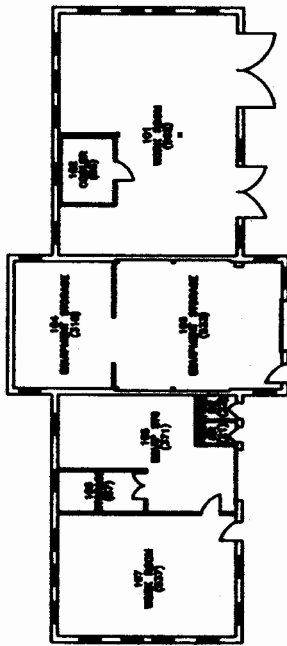
LEGEND
 100 ROOM NUMBER
 (1167) SQUARE FOOTAGE

0 1 2 3 4 5 6 7 8 9 10 11 12 13 14 15 16 17 18 19 20
 GRAPHIC SCALE - FEET

DATE	DESCRIPTION	BY	NO.



OSU FILE 4418-187496
FACILITIES INVENTORY SECTION
 NAME FORAGE DRYER BLD.
 DATE 4/15/87
 DRAWN BY 1
 SCALE 1/8" = 1'-0"



FIRST FLOOR PLAN

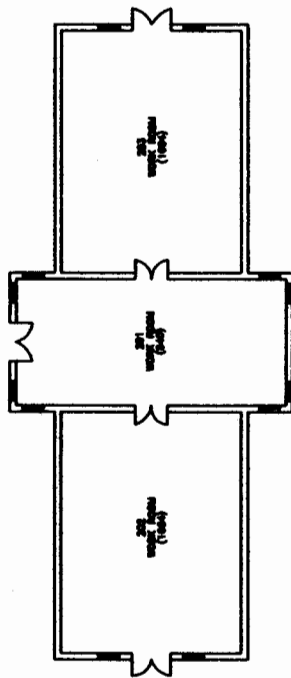
LEGEND
 --- ROOM WALLS
 --- ROOM DOORS
 --- ROOM PARTITION

UNIVERSITY OF GEORGIA
 ARCHITECTURAL DEPARTMENT

The University of Georgia
 ARCHITECTURAL DEPARTMENT

FACILITIES INVENTORY SECTION
 ON AND SHOP
 FIRST FLOOR PLAN

DATE: 10/1/78
 DRAWN BY: [blank]
 CHECKED BY: [blank]
 SCALE: 1/8" = 1'-0"



SECOND FLOOR PLAN ⊕

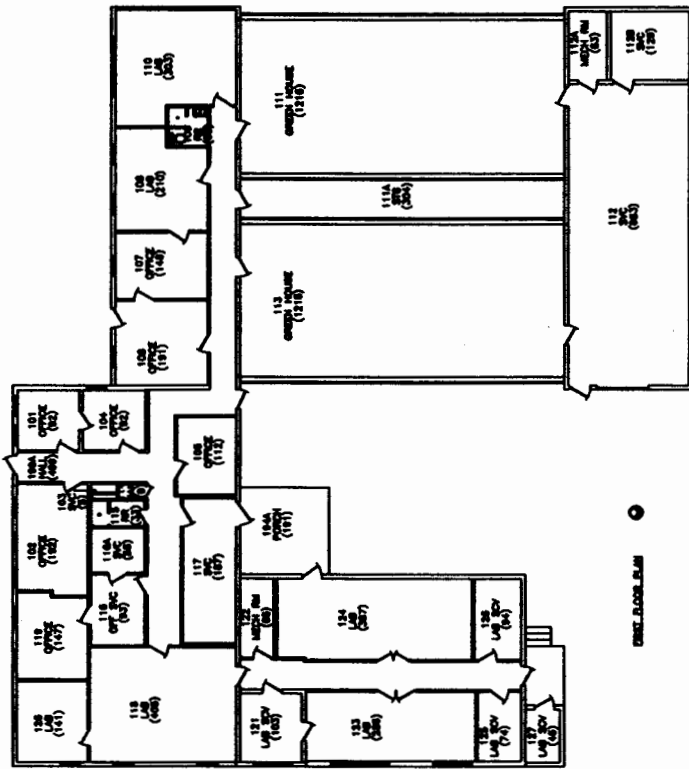
LEGEND
 --- ROOM NUMBER
 --- ROOM USE
 --- ROOM FLOOR

UNIVERSITY OF GEORGIA
 LIBRARY

The University of Georgia
 System Libraries

FACILITIES INVENTORY SECTION
 CH AND SHOP
 SECOND FLOOR PLAN

2
 10/1/78



LEGEND
 100 ROOM NUMBER
 (100) ROOM USE
 ——— ROOM LINE
 ——— ROOM FLOOR

UNIVERSITY OF GEORGIA
 ARCHITECTURAL AND PLANNING
 DEPARTMENT
 CAMPUS SCALE - 1/8" = 1'-0"

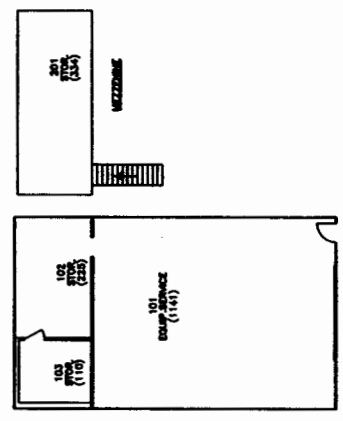
NO.	DESCRIPTION	DATE	BY
1	REVISION		
2	REVISION		
3	REVISION		
4	REVISION		
5	REVISION		
6	REVISION		
7	REVISION		
8	REVISION		
9	REVISION		
10	REVISION		

The University of Georgia
 Planning Department

FACILITIES INVENTORY SECTION
 TURF SCIENCE BLD.
 SHEET NO. 1
 OF 1

DATE: 11-15-78
 DRAWN BY: [Signature]
 CHECKED BY: [Signature]

LEGEND
 100 ROOM NUMBER
 --- ROOM LINE
 (113) SQUARE FOOTAGE



FIRST FLOOR PLAN

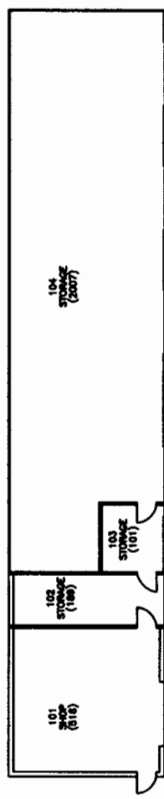
UNIVERSITY OF GEORGIA
 ARCHITECTURAL DEPARTMENT
 DRAWING SCALE - 1/8" = 1'-0"

NO.	DATE	DESCRIPTION	BY

The University of Georgia
 Agricultural Experiment Station

FACILITIES INVENTORY SECTION
 GROUP & SOIL
 TURF RESEARCH SHOP

DATE	SCALE	NO.
10/7/65	1/8" = 1'-0"	1



FIRST FLOOR PLAN

LEGEND
 101 ROOM NUMBER
 (818) ROOM FOOTAGE
 (107) ROOM FOOTAGE

0 1 2 3 4 5 6 7 8 9 10 11 12 13 14 15 16 17 18 19 20
 GRAPHIC SCALE - FEET

NO.	DESCRIPTION	DATE
1	DESIGNED	11-28-58
2	CHECKED	12-22-58



FACILITIES INVENTORY SECTION
 TURF EQUIPMENT STORAGE/SHOP

DATE: 11-28-58
 SHEET NO. 1
 OF 1



LEGEND

- Property Line
- Building
- Grounds
- Hydrography
- Parking Lots & Access Roads
- Sidewalks
- Streets
- Recreation Areas

GA COUNTY

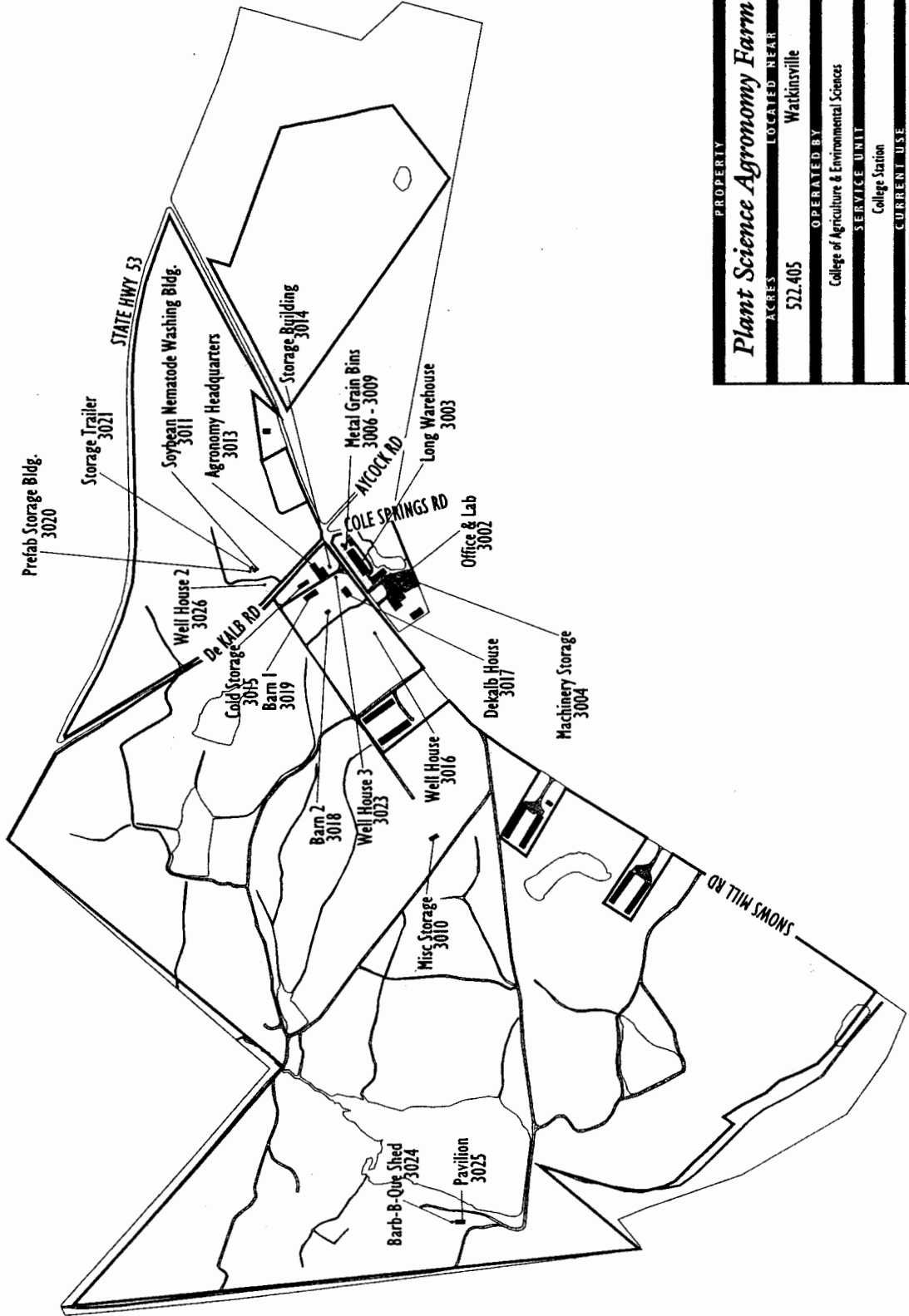
Oconee



DATE UPDATED
November 21, 2001

MAP

6



PROPERTY
Plant Science Agronomy Farm

ACRES
522.405

LOCATED NEAR
Watkinsville

OPERATED BY
College of Agriculture & Environmental Sciences

SERVICE UNIT
College Station

CURRENT USE
Active research involvement by Department of Crop and Soil Sciences,
Plant Pathology Department, and Entomology Department.





UNIVERSITY
of
GEORGIA
PROPERTY
MAPS

LEGEND

- Property Line
- Building
- Grass
- Hydrography
- Parking Lot & Access Roads
- Sidewalk
- Street
- Recreation Area

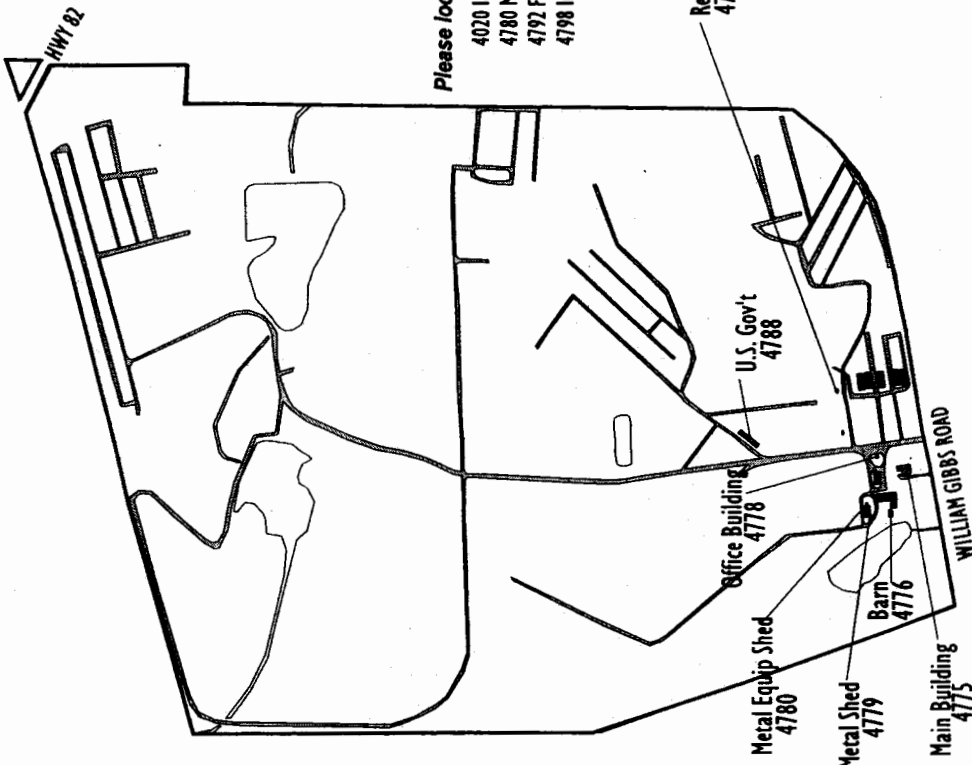
Tift



DATE UPDATED
July 7, 2001

MAP

6



Draft

PROPERTY
Gibbs Farm
310.8
Tifton

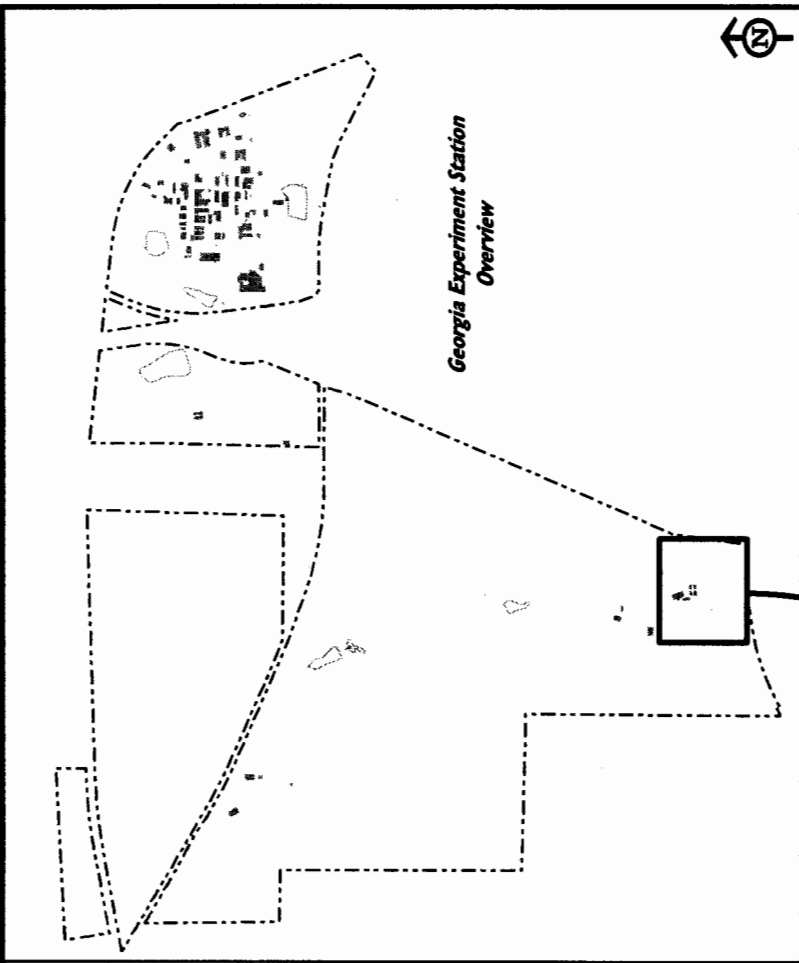
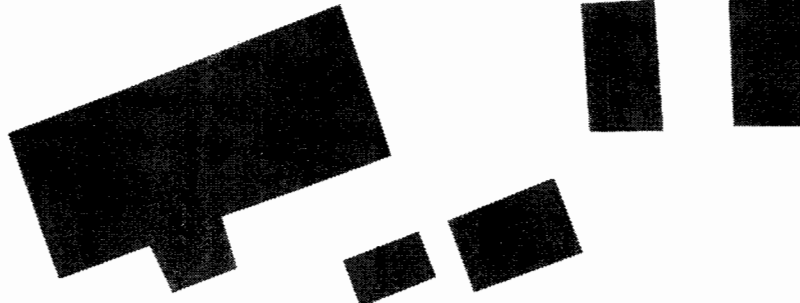
OPERATED BY
College of Agriculture & Environmental Sciences

SERVICE UNIT
Coastal Plain Station

CURRENT USE
Active research involvement by Crop and Soil Sciences,
Plant Pathology, Entomology/Horticulture
and Biological and Agriculture Engineering, as well as USDA cooperators.



Georgia Experiment Station



1 inch equals 60 feet

February 2006

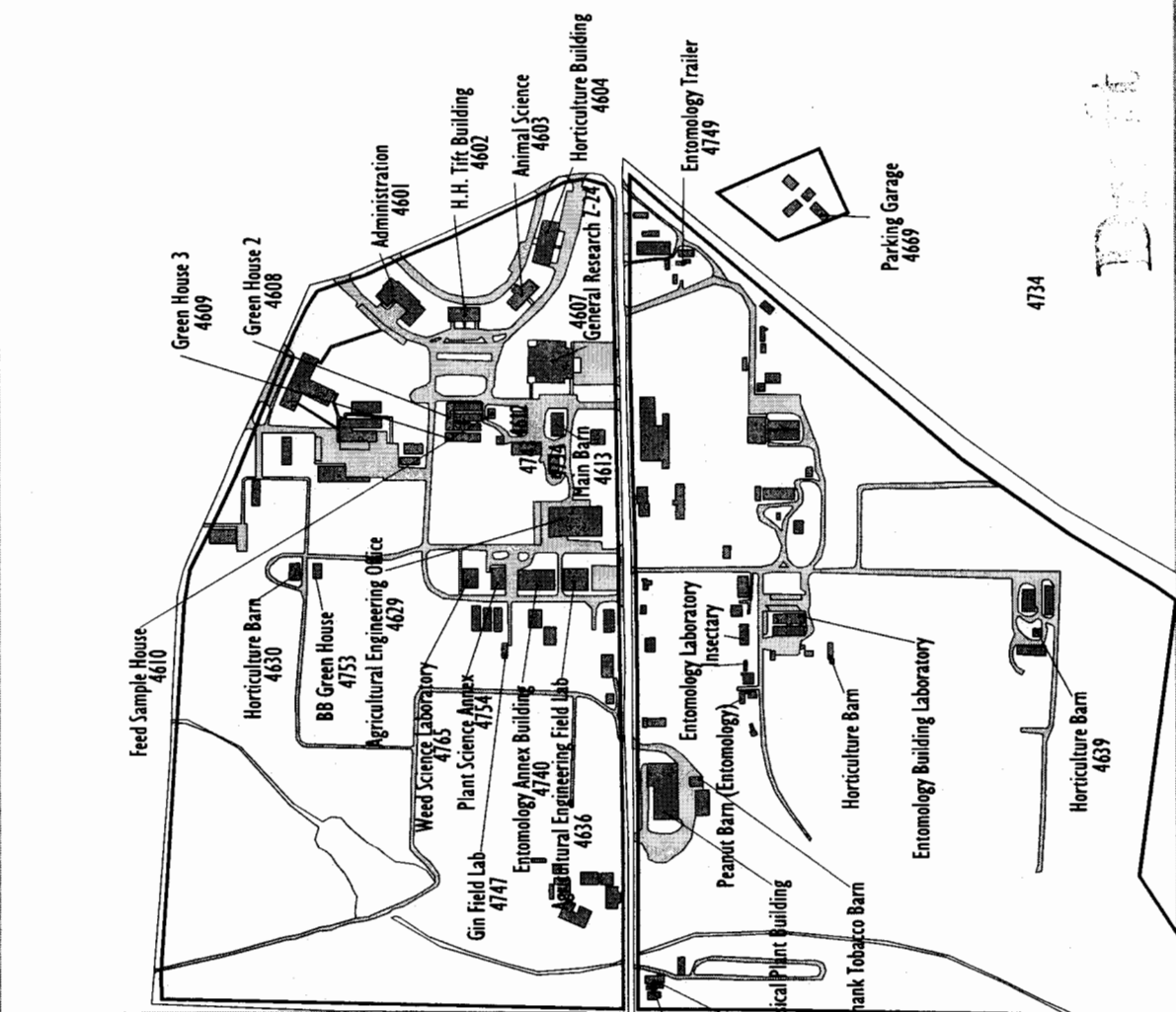


LEGEND

- Property Line
- Buildings
- Grounds
- Hydrography
- Parking Lots & Access Roads
- Sidewalks
- Streets
- Recreation Area

Tift

DATE PREPARED July 19, 2002



CPES Main Campus, RDC Fields & Horticulture Farm

407.1 Tifton

College of Agriculture & Environmental Sciences

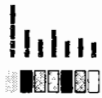
Coastal Plain Station

Active research involvement by Crop and Soil Science, Plant Pathology, Entomology, Horticulture, and Biological and Agriculture Engineering, as well as USDA cooperators.

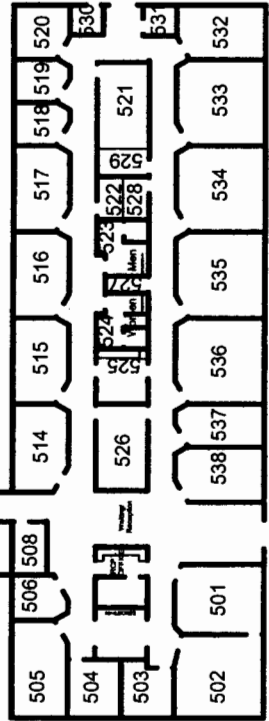
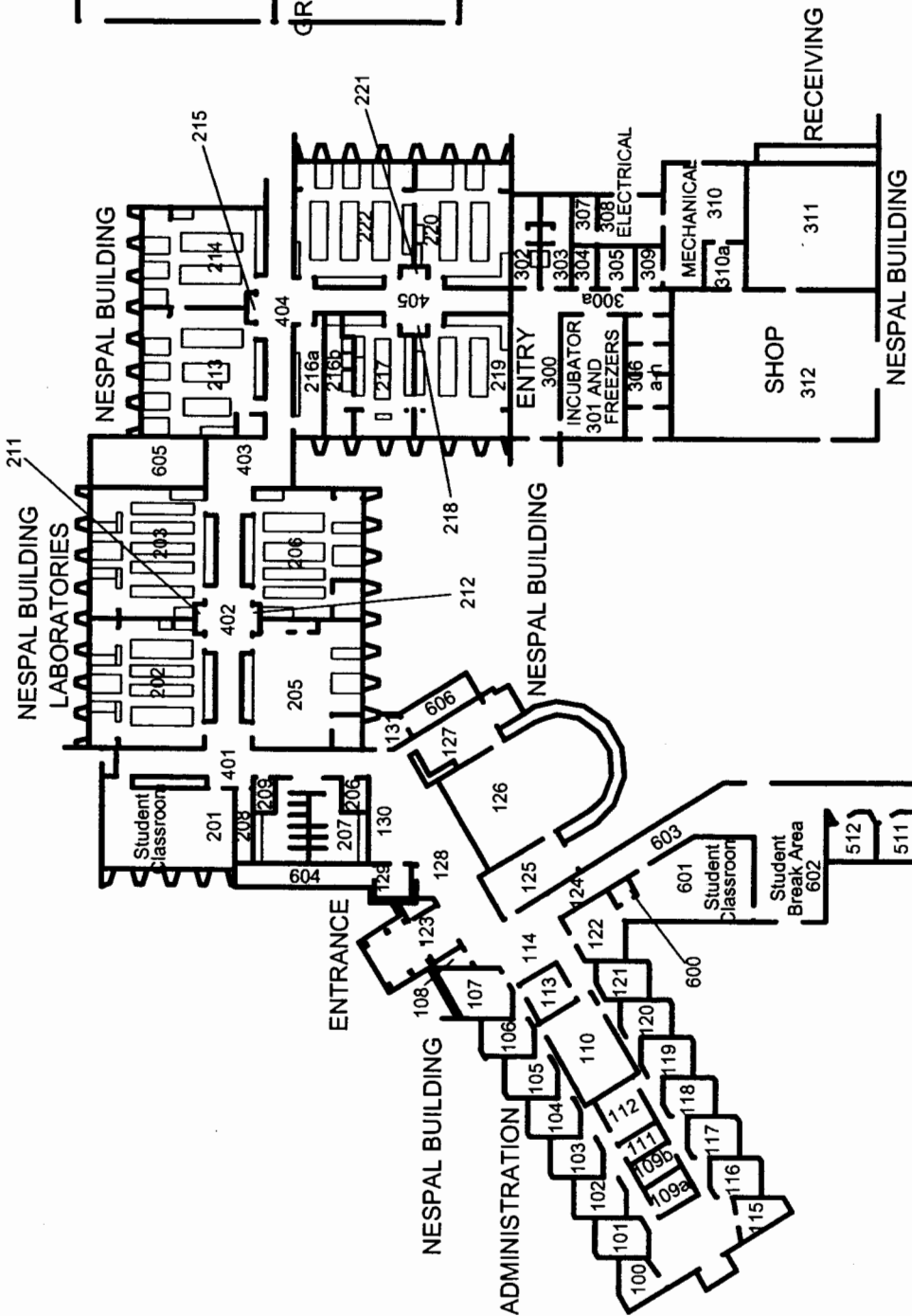
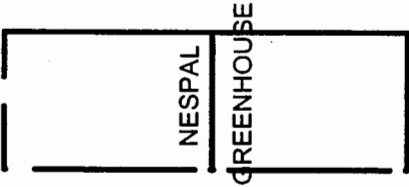
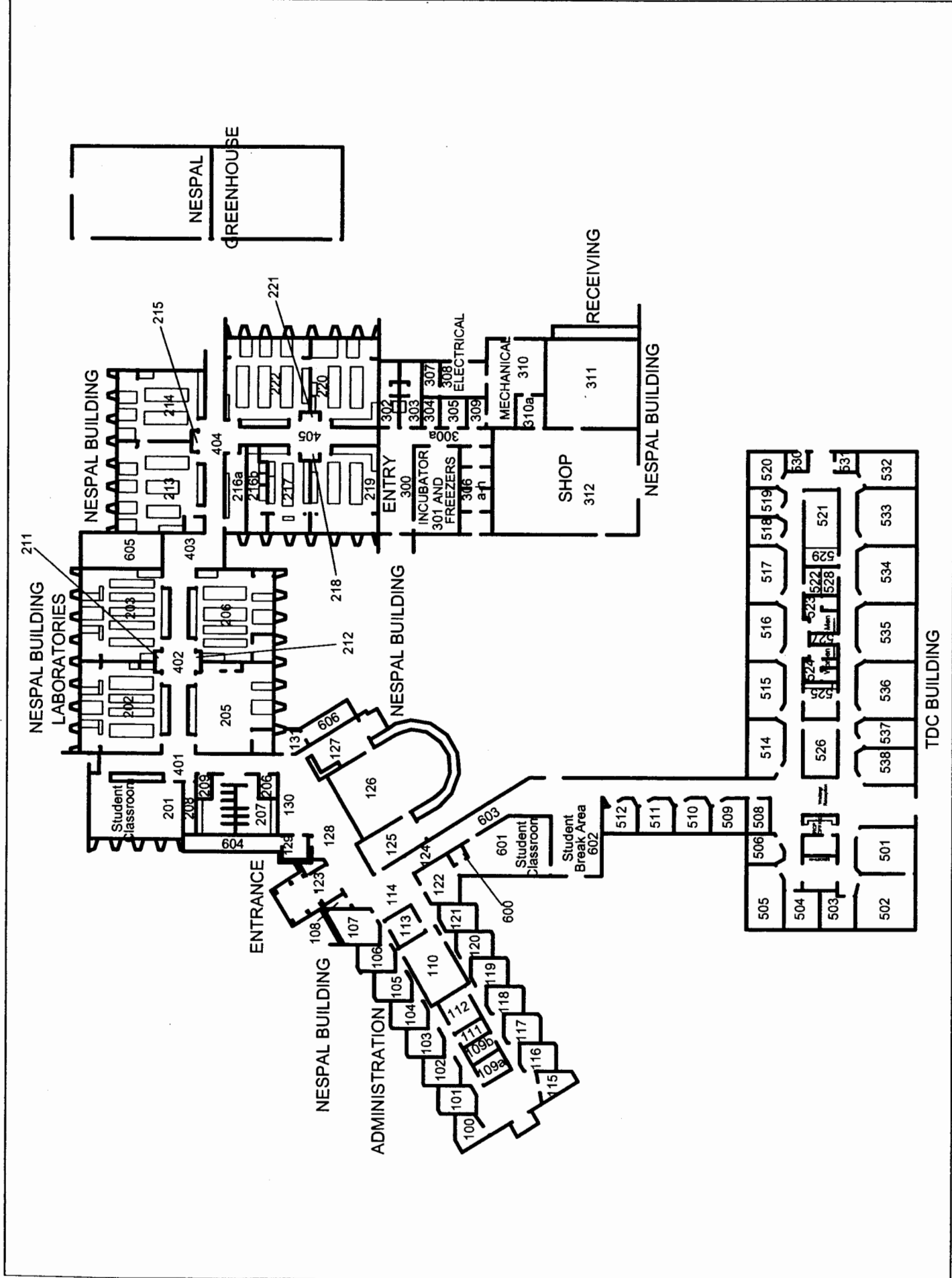
- 4612 - Agronomy Growth Chamber
- 4743 - Nematology Shed
- 4734 - Pesticide Building



CPES Main Campus, RDC Fields and Horticulture Farm



Draft





LEGEND

- Property Line
- Building
- Grass
- Hydrography
- Parking Lots & Access Roads
- Sidewalk
- Street
- Recreation Area

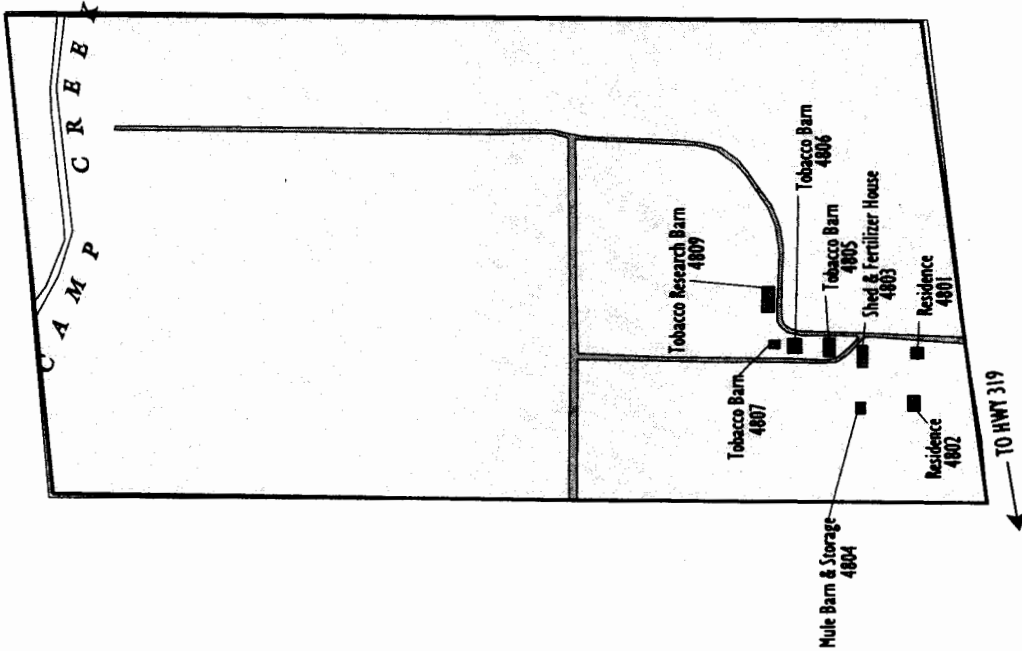
Tift



DATE OF PREPARE
July 27, 2002

MAP

2



PROPERTY
Bowen (Tobacco) Farm

OWNER
75
Tifton

DIRECTED BY
College of Agriculture & Environmental Sciences

SERVICE USER
Coastal Plain Station

DESCRIPTION
This is a primary flatwoods research site (concentrating on tobacco research) with active research involvement by Crop and Soil Science, Plant Pathology, Entomology, Horticulture, and Biological and Agriculture Engineering, as well as USDA cooperators.





LEGEND

- Property Line
- Building
- Grass
- Hydrography
- Parking Lots & Access Roads
- Streets
- Innovation Areas

GA. COUNTY

Tift



DATE UPDATED
January 18, 2012

HAP

3

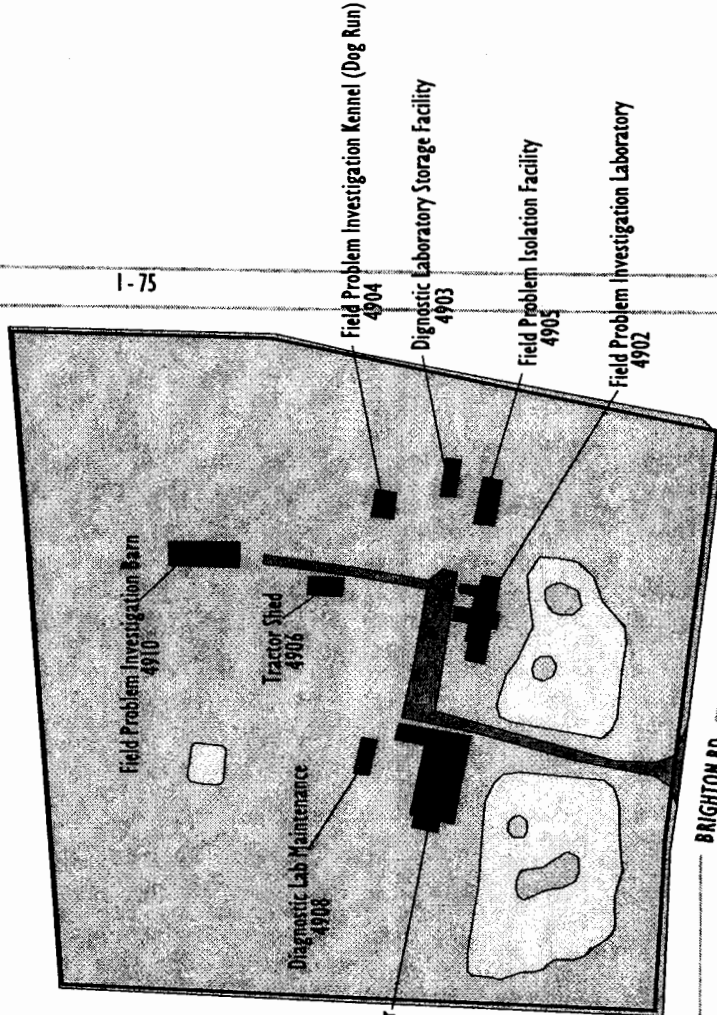
Tifton Diagnostic Research Laboratory

ACRES: 24 LOCATED NEAR: Tifton

OPERATED BY: College of Veterinary Medicine

SERVICE UNIT: Animal Resources

CURRENT USE: Houses the faculty and staff operating the Food Animal Diagnostic Laboratory.





LEGEND

- Property Line
- Building
- Grass
- Hydrography
- Parking Lot & Access Road
- Subroad
- Street
- Accretion Area

GENCOULIN
Tift & Worth



DATE UPDATED
July 21, 1993

MAP
10

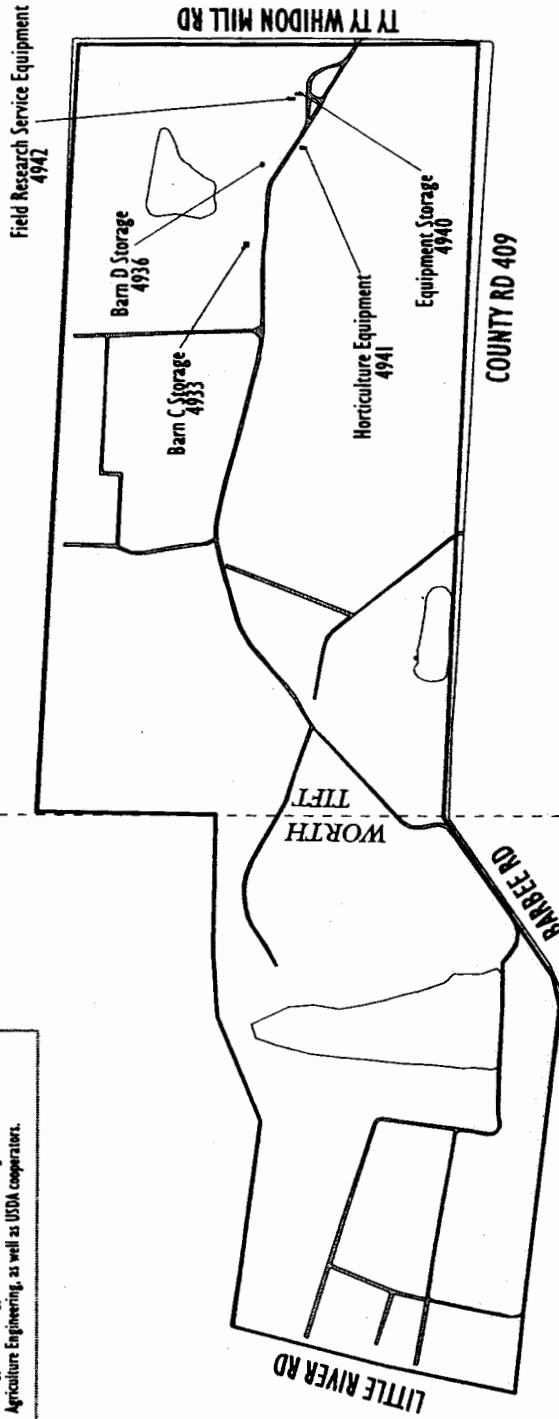
PROPERTY
Ponder Farm

ASLES TIGHTER NEAR
304.83 TTY

OPERATED BY
College of Agriculture & Environmental Sciences

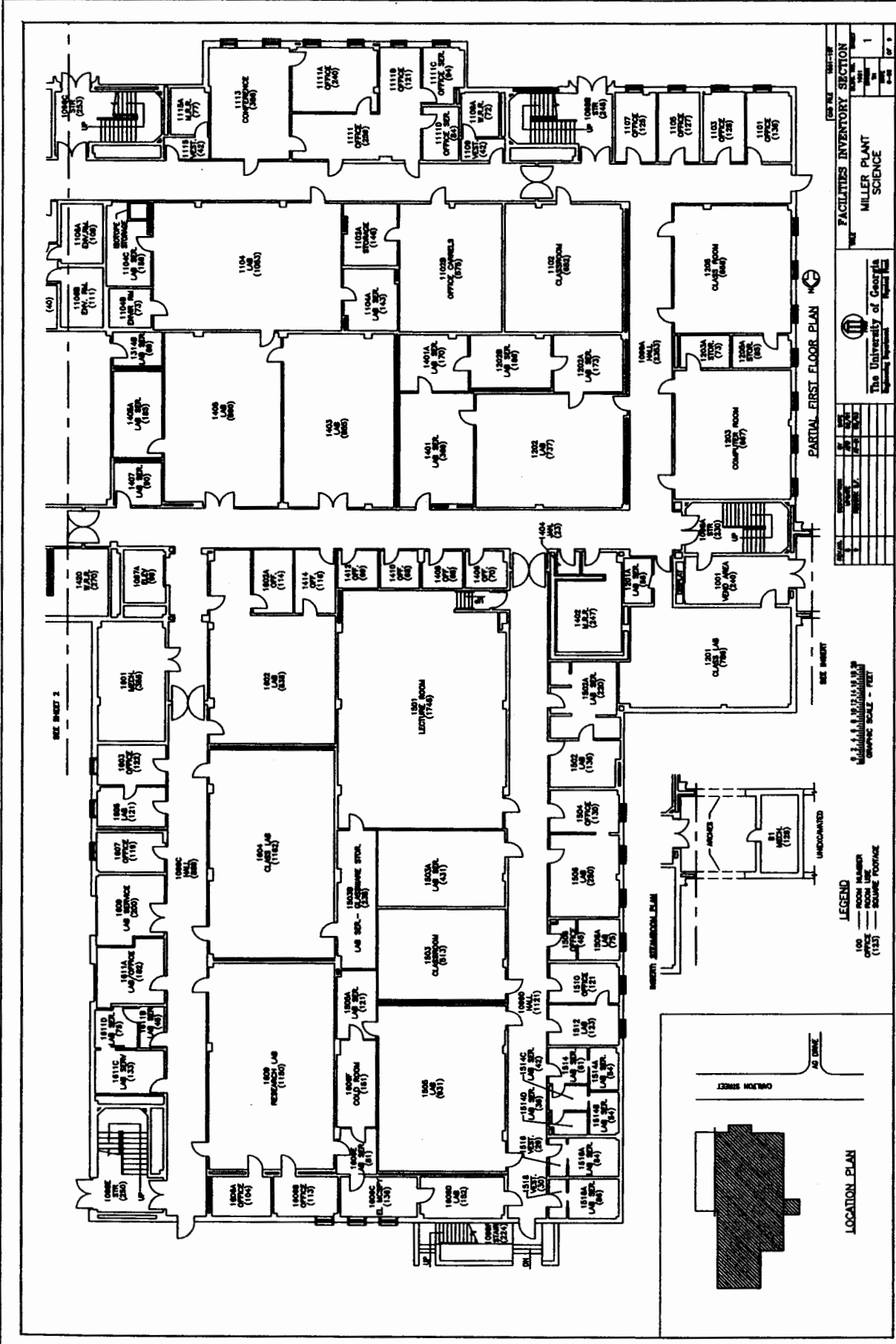
SERVICE UNIT
Coastal Plain Station

CURRENT USE
Active research involvement by Crop and Soil Science, Plant Pathology, Entomology, Horticulture, and Biological and Agriculture Engineering, as well as USDA cooperators.



Draft





SEE SHEET 2

PARTIAL FIRST FLOOR PLAN

NO.	DATE	BY	CHK'D BY	DESCRIPTION
1				
2				
3				
4				
5				
6				
7				
8				
9				
10				
11				
12				
13				
14				
15				
16				
17				
18				
19				
20				
21				
22				
23				
24				
25				
26				
27				
28				
29				
30				
31				
32				
33				
34				
35				
36				
37				
38				
39				
40				
41				
42				
43				
44				
45				
46				
47				
48				
49				
50				
51				
52				
53				
54				
55				
56				
57				
58				
59				
60				
61				
62				
63				
64				
65				
66				
67				
68				
69				
70				
71				
72				
73				
74				
75				
76				
77				
78				
79				
80				
81				
82				
83				
84				
85				
86				
87				
88				
89				
90				
91				
92				
93				
94				
95				
96				
97				
98				
99				
100				

LEGEND
 100 ROOM NUMBER
 101 CLASSIFICATION
 102 SQUARE FOOTAGE

0.1" = 1'-0"
 GRAPHIC SCALE - FEET

UNDISCONNECTED
 MECH (100)

LOCATION PLAN

SEE SHEET 1

SEE SHEET 3

SEE SHEET 4

SEE SHEET 5

SEE SHEET 6

SEE SHEET 7

SEE SHEET 8

SEE SHEET 9

SEE SHEET 10

SEE SHEET 11

SEE SHEET 12

SEE SHEET 13

SEE SHEET 14

SEE SHEET 15

SEE SHEET 16

SEE SHEET 17

SEE SHEET 18

SEE SHEET 19

SEE SHEET 20

SEE SHEET 21

SEE SHEET 22

SEE SHEET 23

SEE SHEET 24

SEE SHEET 25

SEE SHEET 26

SEE SHEET 27

SEE SHEET 28

SEE SHEET 29

SEE SHEET 30

SEE SHEET 31

SEE SHEET 32

SEE SHEET 33

SEE SHEET 34

SEE SHEET 35

SEE SHEET 36

SEE SHEET 37

SEE SHEET 38

SEE SHEET 39

SEE SHEET 40

SEE SHEET 41

SEE SHEET 42

SEE SHEET 43

SEE SHEET 44

SEE SHEET 45

SEE SHEET 46

SEE SHEET 47

SEE SHEET 48

SEE SHEET 49

SEE SHEET 50

SEE SHEET 51

SEE SHEET 52

SEE SHEET 53

SEE SHEET 54

SEE SHEET 55

SEE SHEET 56

SEE SHEET 57

SEE SHEET 58

SEE SHEET 59

SEE SHEET 60

SEE SHEET 61

SEE SHEET 62

SEE SHEET 63

SEE SHEET 64

SEE SHEET 65

SEE SHEET 66

SEE SHEET 67

SEE SHEET 68

SEE SHEET 69

SEE SHEET 70

SEE SHEET 71

SEE SHEET 72

SEE SHEET 73

SEE SHEET 74

SEE SHEET 75

SEE SHEET 76

SEE SHEET 77

SEE SHEET 78

SEE SHEET 79

SEE SHEET 80

SEE SHEET 81

SEE SHEET 82

SEE SHEET 83

SEE SHEET 84

SEE SHEET 85

SEE SHEET 86

SEE SHEET 87

SEE SHEET 88

SEE SHEET 89

SEE SHEET 90

SEE SHEET 91

SEE SHEET 92

SEE SHEET 93

SEE SHEET 94

SEE SHEET 95

SEE SHEET 96

SEE SHEET 97

SEE SHEET 98

SEE SHEET 99

SEE SHEET 100

FACILITIES INVENTORY SECTION
 MILLER PLANT
 SCIENCE

The University of Georgia
 Agricultural Experiment Station

DATE: 11-11-78
 DRAWN BY: J. L. BROWN
 CHECKED BY: J. L. BROWN
 SCALE: AS SHOWN

LEGEND
 100 ROOM NUMBER
 101 CLASSIFICATION
 102 SQUARE FOOTAGE

0.1" = 1'-0"
 GRAPHIC SCALE - FEET

UNDISCONNECTED
 MECH (100)

LOCATION PLAN

SEE SHEET 1

SEE SHEET 2

SEE SHEET 3

SEE SHEET 4

SEE SHEET 5

SEE SHEET 6

SEE SHEET 7

SEE SHEET 8

SEE SHEET 9

SEE SHEET 10

SEE SHEET 11

SEE SHEET 12

SEE SHEET 13

SEE SHEET 14

SEE SHEET 15

SEE SHEET 16

SEE SHEET 17

SEE SHEET 18

SEE SHEET 19

SEE SHEET 20

SEE SHEET 21

SEE SHEET 22

SEE SHEET 23

SEE SHEET 24

SEE SHEET 25

SEE SHEET 26

SEE SHEET 27

SEE SHEET 28

SEE SHEET 29

SEE SHEET 30

SEE SHEET 31

SEE SHEET 32

SEE SHEET 33

SEE SHEET 34

SEE SHEET 35

SEE SHEET 36

SEE SHEET 37

SEE SHEET 38

SEE SHEET 39

SEE SHEET 40

SEE SHEET 41

SEE SHEET 42

SEE SHEET 43

SEE SHEET 44

SEE SHEET 45

SEE SHEET 46

SEE SHEET 47

SEE SHEET 48

SEE SHEET 49

SEE SHEET 50

SEE SHEET 51

SEE SHEET 52

SEE SHEET 53

SEE SHEET 54

SEE SHEET 55

SEE SHEET 56

SEE SHEET 57

SEE SHEET 58

SEE SHEET 59

SEE SHEET 60

SEE SHEET 61

SEE SHEET 62

SEE SHEET 63

SEE SHEET 64

SEE SHEET 65

SEE SHEET 66

SEE SHEET 67

SEE SHEET 68

SEE SHEET 69

SEE SHEET 70

SEE SHEET 71

SEE SHEET 72

SEE SHEET 73

SEE SHEET 74

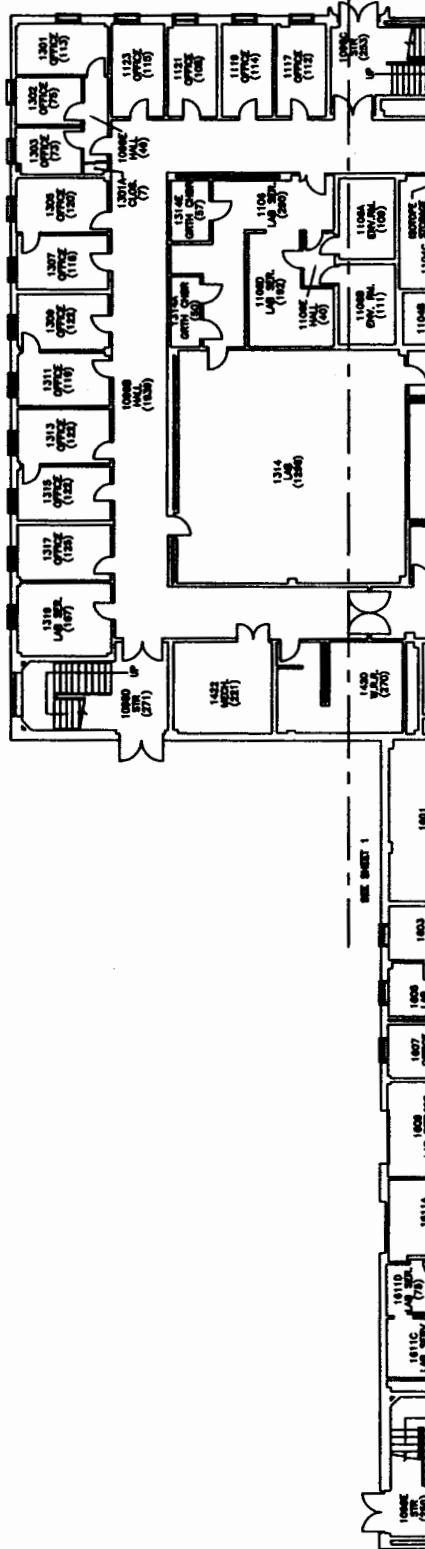
SEE SHEET 75

SEE SHEET 76

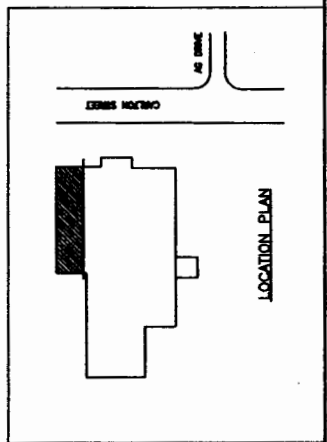
SEE SHEET 77

SEE SHEET 78

SEE SHEET 79



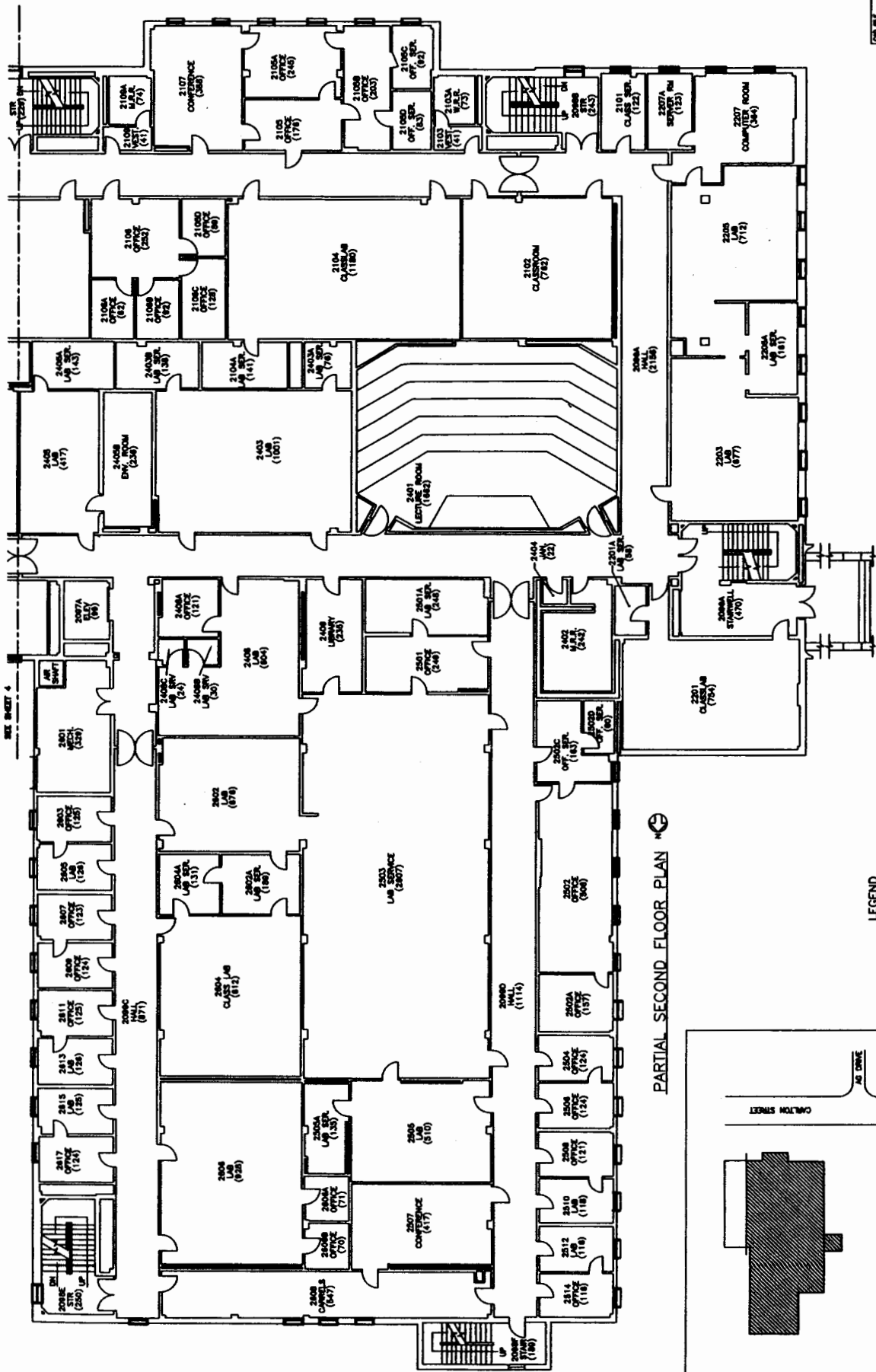
PARTIAL FIRST FLOOR PLAN



LEGEND
 ROOM NUMBER
 ROOM USE
 (115) - ROOM FOOTPRINT

J. J. A. S. O. U. S. V. M. P.
 GEOMETRIC SCALE - 1/8" = 1'-0"

DATE FILED		1987-11-18
DRAWN BY		W. J. B. / J. B. B.
CHECKED BY		W. J. B. / J. B. B.
PROJECT		FACILITIES INVENTORY SECTION
BUILDING		MILLER PLANT SCIENCE
NO. OF SHEETS	2	
SHEET NO.	2	
The University of Georgia Planning Department		

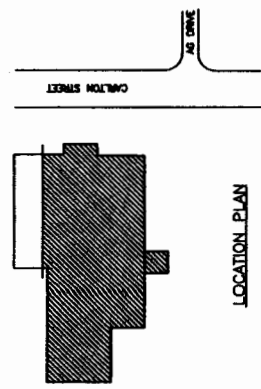


SEE SHEET 4

PARTIAL SECOND FLOOR PLAN

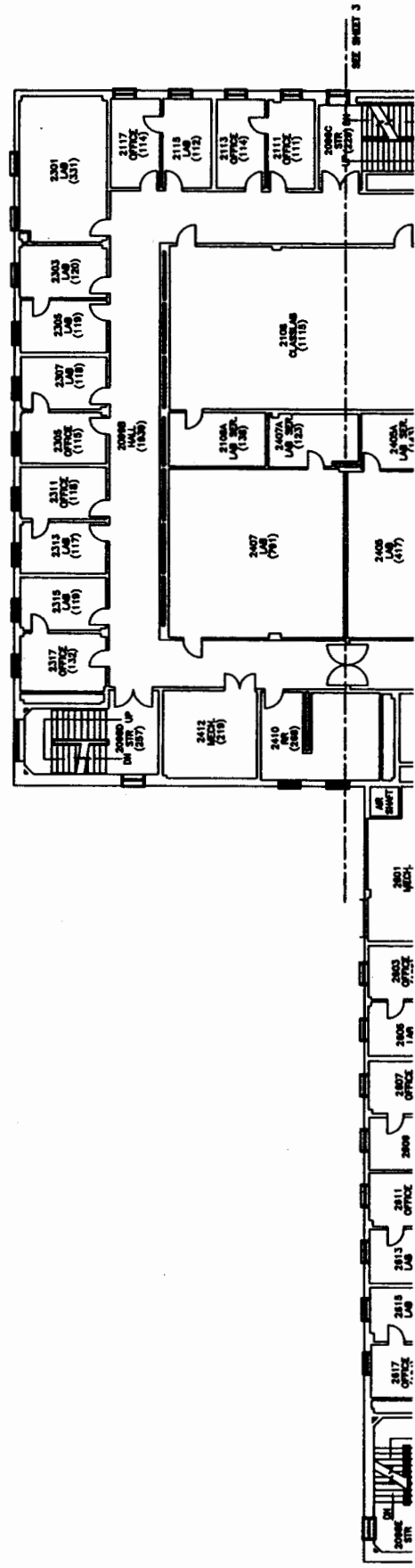
DATE	10/11/78
DRAWN BY	UNIVERSITY OF GEORGIA
CHECKED BY	UNIVERSITY OF GEORGIA
SCALE	GRAPHIC SCALE - FEET
<p>LEGEND</p> <p>100 — ROOM NUMBER</p> <p>OFFICE — ROOM USE</p> <p>(137) — SQUARE FOOTAGE</p>	
<p>UNIVERSITY OF GEORGIA</p> <p>Miller Plant Science</p>	
DATE	10/11/78
DRAWN BY	UNIVERSITY OF GEORGIA
CHECKED BY	UNIVERSITY OF GEORGIA
SCALE	GRAPHIC SCALE - FEET
<p>LEGEND</p> <p>100 — ROOM NUMBER</p> <p>OFFICE — ROOM USE</p> <p>(137) — SQUARE FOOTAGE</p>	
<p>UNIVERSITY OF GEORGIA</p> <p>Miller Plant Science</p>	

DATE	10/11/78
DRAWN BY	UNIVERSITY OF GEORGIA
CHECKED BY	UNIVERSITY OF GEORGIA
SCALE	GRAPHIC SCALE - FEET
<p>LEGEND</p> <p>100 — ROOM NUMBER</p> <p>OFFICE — ROOM USE</p> <p>(137) — SQUARE FOOTAGE</p>	
<p>UNIVERSITY OF GEORGIA</p> <p>Miller Plant Science</p>	

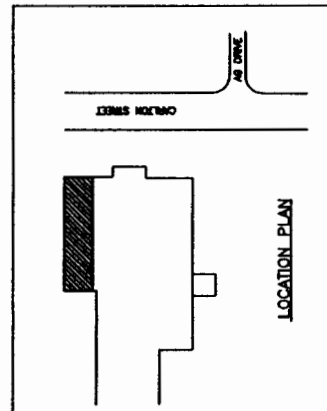


LOCATION PLAN

DATE	10/11/78
DRAWN BY	UNIVERSITY OF GEORGIA
CHECKED BY	UNIVERSITY OF GEORGIA
SCALE	GRAPHIC SCALE - FEET
<p>LEGEND</p> <p>100 — ROOM NUMBER</p> <p>OFFICE — ROOM USE</p> <p>(137) — SQUARE FOOTAGE</p>	
<p>UNIVERSITY OF GEORGIA</p> <p>Miller Plant Science</p>	



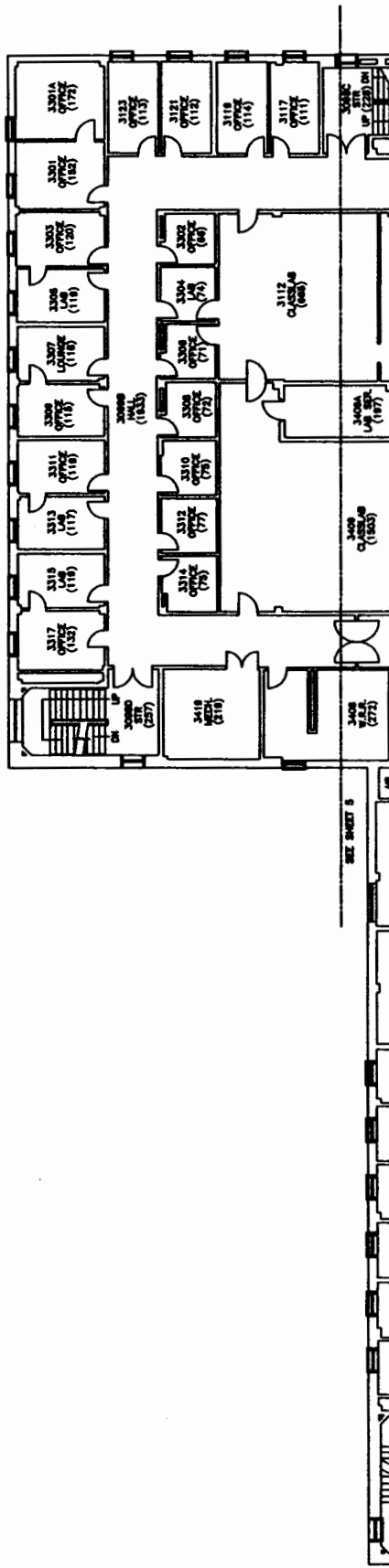
PARTIAL SECOND FLOOR PLAN



LEGEND
 --- ROOM NUMBER
 --- OFFICE
 --- LAB
 --- SQUARE FOOTAGE

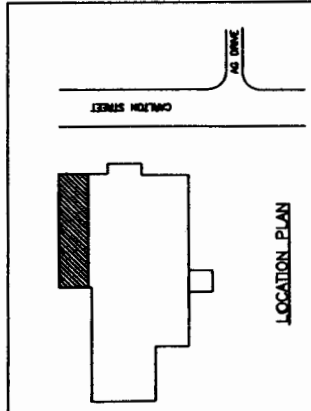
SCALE: 1/8" = 1'-0"
 GRAPHIC SCALE - FEET

UNIVERSITY OF GEORGIA Engineering Department		MILLER PLANT SCIENCE	
FACILITIES INVENTORY SECTION		DRAWING NUMBER	
DATE: 1/17/78		DRAWING NUMBER: 4	
BY: [Signature]		DATE: 1/17/78	
CHECKED BY: [Signature]		DATE: 1/17/78	
APPROVED BY: [Signature]		DATE: 1/17/78	
PROJECT NO. 100-100		SHEET NO. 4	
		OF 5	



PARTIAL THIRD FLOOR PLAN

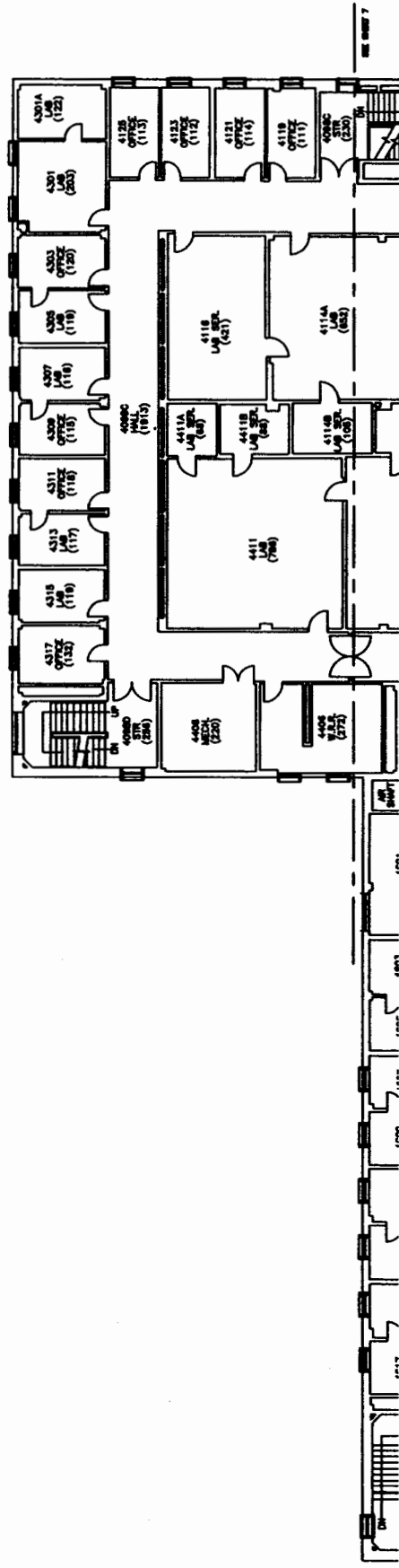
LEGEND
 ROOM NUMBER
 OFFICE (118)
 LAB (120)
 SCALE FOOTAGE



FACILITIES INVENTORY SECTION		MILLER PLANT SCIENCE	
NO.	DATE	BY	REVISION
1	10/15/78	J.M.	1
2	11/15/78	J.M.	2
3	12/15/78	J.M.	3
4	1/15/79	J.M.	4
5	2/15/79	J.M.	5
6	3/15/79	J.M.	6

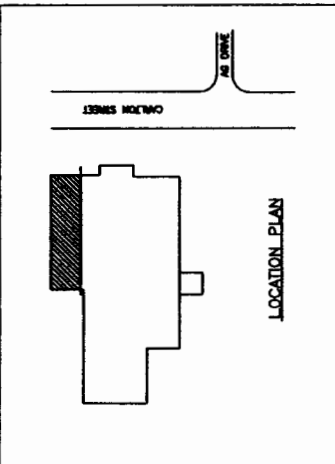
The University of Georgia
 Engineering Department

6
 1 of 1

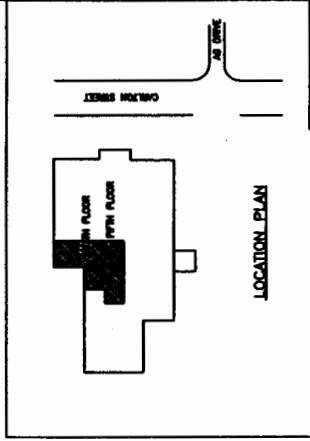
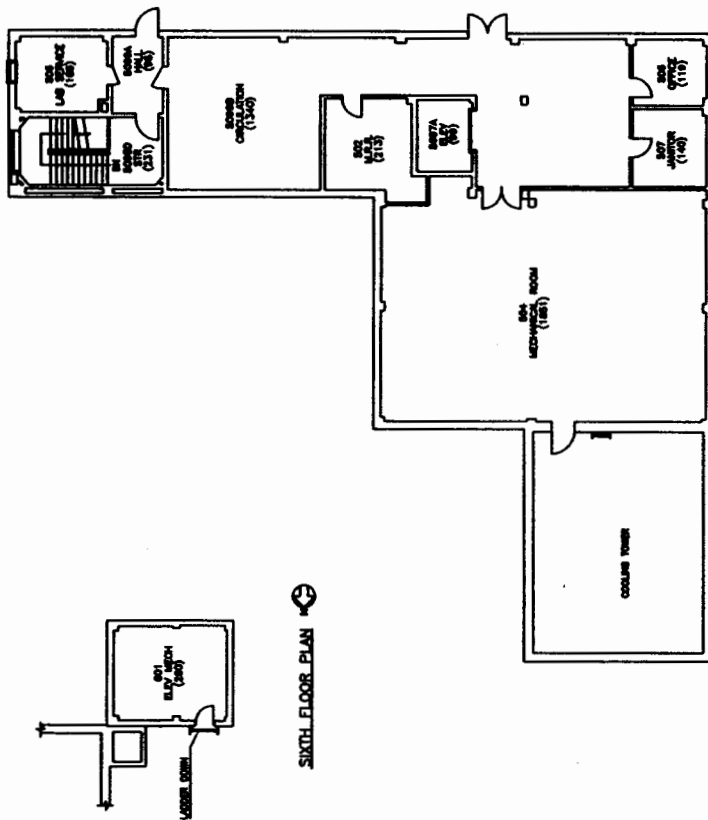


PARTIAL FOURTH FLOOR PLAN

LEGEND
 100 — ROOM NUMBER
 — ROOM LINE
 (125) — SQUARE FOOTAGE
 0, 1, 2, 3, 4, 5, 6, 7, 8, 9, 10, 11, 12, 13, 14, 15, 16, 17, 18, 19, 20
 GRAPHIC SCALE - FEET



DATE FILED		1987-2-28	
FACILITIES INVENTORY SECTION			
DATE	BY	DATE	BY
1987	...	1987	...
MILLER PLANT		SCIENCE	
The University of Georgia		Athens, Georgia	
1000	...	2118	...
1000	...	277	...
1000	...	277	...



FACILITIES INVENTORY SECTION	
DATE	BY
10/1/88	J. W. HARRIS
10/2/88	J. W. HARRIS
10/3/88	J. W. HARRIS
10/4/88	J. W. HARRIS
10/5/88	J. W. HARRIS
10/6/88	J. W. HARRIS
10/7/88	J. W. HARRIS
10/8/88	J. W. HARRIS
10/9/88	J. W. HARRIS
10/10/88	J. W. HARRIS
10/11/88	J. W. HARRIS
10/12/88	J. W. HARRIS
10/13/88	J. W. HARRIS
10/14/88	J. W. HARRIS
10/15/88	J. W. HARRIS
10/16/88	J. W. HARRIS
10/17/88	J. W. HARRIS
10/18/88	J. W. HARRIS
10/19/88	J. W. HARRIS
10/20/88	J. W. HARRIS
10/21/88	J. W. HARRIS
10/22/88	J. W. HARRIS
10/23/88	J. W. HARRIS
10/24/88	J. W. HARRIS
10/25/88	J. W. HARRIS
10/26/88	J. W. HARRIS
10/27/88	J. W. HARRIS
10/28/88	J. W. HARRIS
10/29/88	J. W. HARRIS
10/30/88	J. W. HARRIS
10/31/88	J. W. HARRIS

9, 10, 11, 12, 13, 14, 15, 16, 17, 18, 19, 20, 21, 22, 23, 24, 25, 26, 27, 28, 29, 30, 31, 32, 33, 34, 35, 36, 37, 38, 39, 40, 41, 42, 43, 44, 45, 46, 47, 48, 49, 50, 51, 52, 53, 54, 55, 56, 57, 58, 59, 60, 61, 62, 63, 64, 65, 66, 67, 68, 69, 70, 71, 72, 73, 74, 75, 76, 77, 78, 79, 80, 81, 82, 83, 84, 85, 86, 87, 88, 89, 90, 91, 92, 93, 94, 95, 96, 97, 98, 99, 100, 101, 102, 103, 104, 105, 106, 107, 108, 109, 110, 111, 112, 113, 114, 115, 116, 117, 118, 119, 120, 121, 122, 123, 124, 125, 126, 127, 128, 129, 130, 131, 132, 133, 134, 135, 136, 137, 138, 139, 140, 141, 142, 143, 144, 145, 146, 147, 148, 149, 150, 151, 152, 153, 154, 155, 156, 157, 158, 159, 160, 161, 162, 163, 164, 165, 166, 167, 168, 169, 170, 171, 172, 173, 174, 175, 176, 177, 178, 179, 180, 181, 182, 183, 184, 185, 186, 187, 188, 189, 190, 191, 192, 193, 194, 195, 196, 197, 198, 199, 200

LEGEND
 100 - OFFICE
 101 - COLLABORATION ROOM
 102 - MEETING ROOM
 103 - COLLABORATION ROOM
 104 - COLLABORATION ROOM
 105 - COLLABORATION ROOM
 106 - COLLABORATION ROOM
 107 - COLLABORATION ROOM
 108 - COLLABORATION ROOM
 109 - COLLABORATION ROOM
 110 - COLLABORATION ROOM
 111 - COLLABORATION ROOM
 112 - COLLABORATION ROOM
 113 - COLLABORATION ROOM
 114 - COLLABORATION ROOM
 115 - COLLABORATION ROOM
 116 - COLLABORATION ROOM
 117 - COLLABORATION ROOM
 118 - COLLABORATION ROOM
 119 - COLLABORATION ROOM
 120 - COLLABORATION ROOM
 121 - COLLABORATION ROOM
 122 - COLLABORATION ROOM
 123 - COLLABORATION ROOM
 124 - COLLABORATION ROOM
 125 - COLLABORATION ROOM
 126 - COLLABORATION ROOM
 127 - COLLABORATION ROOM
 128 - COLLABORATION ROOM
 129 - COLLABORATION ROOM
 130 - COLLABORATION ROOM
 131 - COLLABORATION ROOM
 132 - COLLABORATION ROOM
 133 - COLLABORATION ROOM
 134 - COLLABORATION ROOM
 135 - COLLABORATION ROOM
 136 - COLLABORATION ROOM
 137 - COLLABORATION ROOM
 138 - COLLABORATION ROOM
 139 - COLLABORATION ROOM
 140 - COLLABORATION ROOM
 141 - COLLABORATION ROOM
 142 - COLLABORATION ROOM
 143 - COLLABORATION ROOM
 144 - COLLABORATION ROOM
 145 - COLLABORATION ROOM
 146 - COLLABORATION ROOM
 147 - COLLABORATION ROOM
 148 - COLLABORATION ROOM
 149 - COLLABORATION ROOM
 150 - COLLABORATION ROOM
 151 - COLLABORATION ROOM
 152 - COLLABORATION ROOM
 153 - COLLABORATION ROOM
 154 - COLLABORATION ROOM
 155 - COLLABORATION ROOM
 156 - COLLABORATION ROOM
 157 - COLLABORATION ROOM
 158 - COLLABORATION ROOM
 159 - COLLABORATION ROOM
 160 - COLLABORATION ROOM
 161 - COLLABORATION ROOM
 162 - COLLABORATION ROOM
 163 - COLLABORATION ROOM
 164 - COLLABORATION ROOM
 165 - COLLABORATION ROOM
 166 - COLLABORATION ROOM
 167 - COLLABORATION ROOM
 168 - COLLABORATION ROOM
 169 - COLLABORATION ROOM
 170 - COLLABORATION ROOM
 171 - COLLABORATION ROOM
 172 - COLLABORATION ROOM
 173 - COLLABORATION ROOM
 174 - COLLABORATION ROOM
 175 - COLLABORATION ROOM
 176 - COLLABORATION ROOM
 177 - COLLABORATION ROOM
 178 - COLLABORATION ROOM
 179 - COLLABORATION ROOM
 180 - COLLABORATION ROOM
 181 - COLLABORATION ROOM
 182 - COLLABORATION ROOM
 183 - COLLABORATION ROOM
 184 - COLLABORATION ROOM
 185 - COLLABORATION ROOM
 186 - COLLABORATION ROOM
 187 - COLLABORATION ROOM
 188 - COLLABORATION ROOM
 189 - COLLABORATION ROOM
 190 - COLLABORATION ROOM
 191 - COLLABORATION ROOM
 192 - COLLABORATION ROOM
 193 - COLLABORATION ROOM
 194 - COLLABORATION ROOM
 195 - COLLABORATION ROOM
 196 - COLLABORATION ROOM
 197 - COLLABORATION ROOM
 198 - COLLABORATION ROOM
 199 - COLLABORATION ROOM
 200 - COLLABORATION ROOM

UNIVERSITY OF GEORGIA
 MILLER PLANT SCIENCE
 100 OAKRIDGE STREET
 ATHENS, GA 30602
 404/542-1234